



# ArrestAll®



POWERED BY

## REDClean® Technology

Design | Engineering | Manufacturing | Maintenance | Spare Parts

[aafintl.com](http://aafintl.com)



Bringing clean air to life.®

# Compact, Efficient, Low Maintenance

**Cost-effective, versatile dust collector for low-grade combustible applications.**

The ArrestAll® dust collector is a versatile, compact, and efficient solution for small to medium-scale dry dust applications from fine to coarse dust. This shaker-style collector does not require compressed air; it relies on a motor to shake the envelope filters clean once they are caked with dust. Once the dust has been shaken off, there are a variety of different disposal options to meet your needs.

The ArrestAll's design allows for easy assembly and operation with very little maintenance. The fan is positioned on top of the unit so that it never encounters dust, ensuring its optimum operation. With the ability to operate intermittently, this compact collector excels in small to medium applications.

## A strategic part in the process

Proven performance across a variety of applications:

- | Material Packaging
- | Material Processing
- | Bulk Material Handling
- | Bulk Material Conveying
- | Silo Venting
- | Educational Woodworking Shops



Wood, Pulp  
& Paper



Industrial  
Minerals



Chemical



## All-In-One Easy Assembly

The ArrestAll's efficient design enables it to accomplish the same tasks as a large unit in a smaller footprint. The fan, silencer, and control panel are all-in-one units, reducing the space required. The easy assembly allows for a quick and easy installation process, getting you back to production faster, with less maintenance keeping you in production longer.



# ArrestAll®

Flexible, powerful, easy operation.

## 1 TEFC Fan Motor:

Durable, multi-voltage motor for reliable performance across various power sources, functioning in 208, 230, 460, or 575 voltage settings to ensure adaptability.

## 2 Horizontal Fan Outlet:

Optimized airflow for enhanced dust control, designed to direct air efficiently for flexible installation and space-saving setups.

## 3 Backward Inclined

**Fan:** Energy-efficient design for maximum air movement and reduced noise, minimizing energy consumption while delivering powerful air circulation to lower operating costs.

## 4 One-Piece Cloth Envelope

**Filter:** Effective dust filtration with minimal maintenance, capturing particles in a single, durable unit that simplifies cleaning and extends filter life.

## 5 Integral Control Panel:

Nema 4 panel with across the line fan motor starter. Shaker motor controls. Remote start-stop capable. Supports integration with accessory components.

## 6 XP BTA:

The XP BTA is a hard-pipe barrel top adapter designed for combustible dust applications, offering a cost-effective alternative to rotary air locks.

## 7 Funnel Bottom:

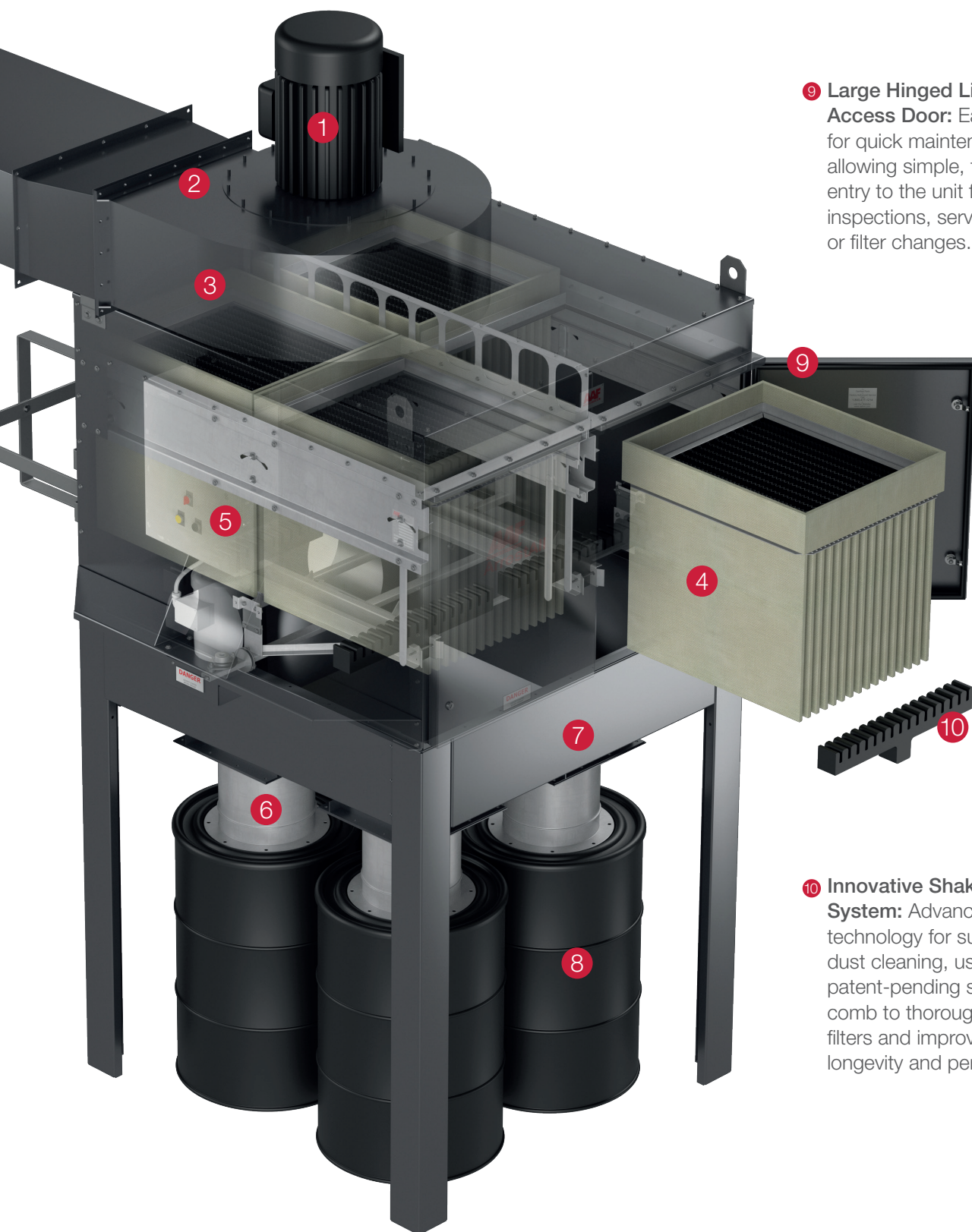
Designed for smooth and efficient dust disposal, ensuring free-flowing dust and debris into disposal containers to prevent blockages, downtime, and accumulation for hassle-free operation.

## 8 55-Gallon Drums:

Increased capacity for longer intervals between disposal, offering expanded dust storage to reduce emptying frequency and enhance productivity.





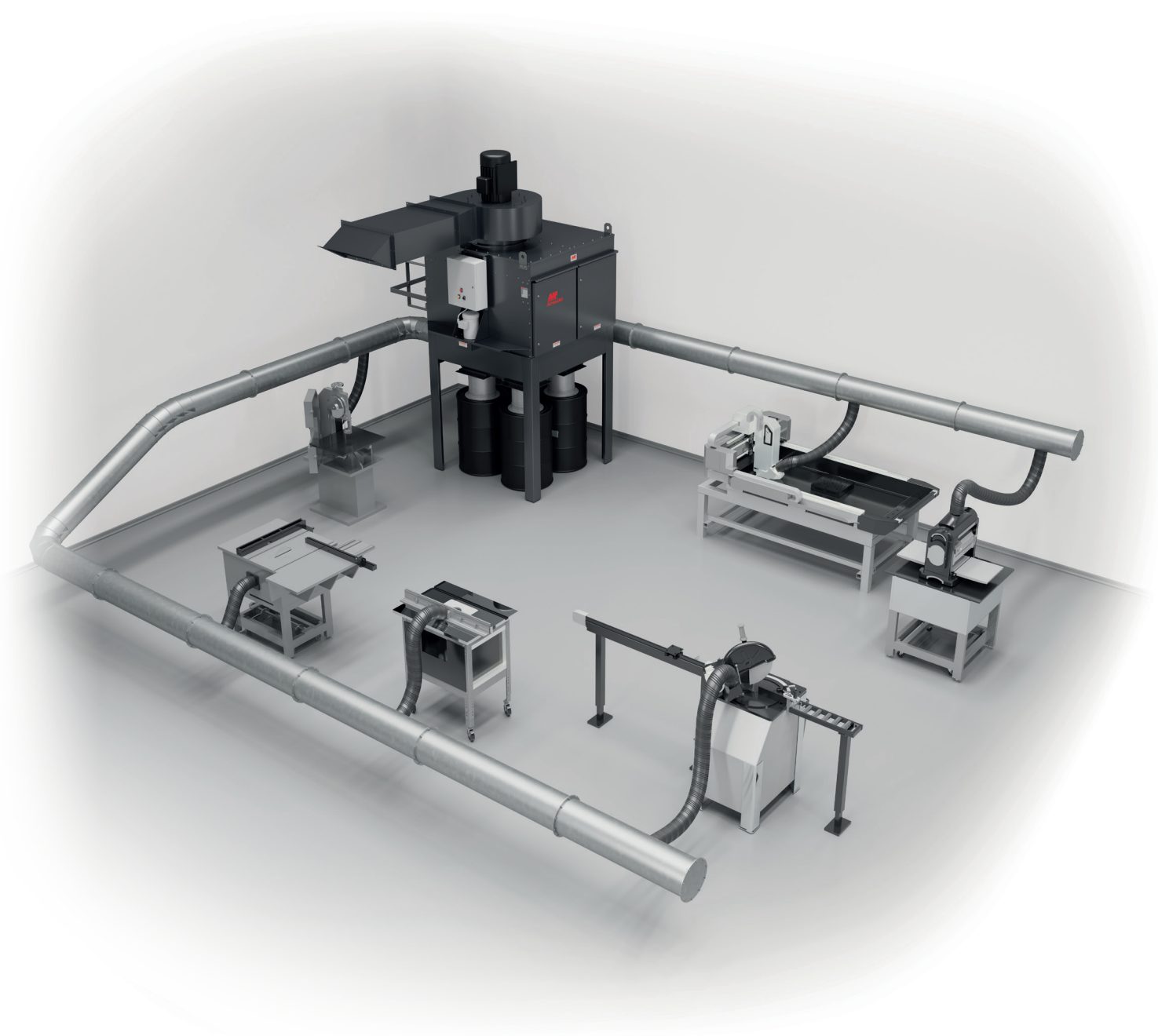


**9 Large Hinged Lift-Off Access Door:** Easy access for quick maintenance, allowing simple, tool-free entry to the unit for routine inspections, servicing, or filter changes.

**10 Innovative Shaker System:** Advanced shaker technology for superior dust cleaning, using a patent-pending shaker comb to thoroughly clean filters and improve system longevity and performance.

## A versatile collector with countless options to meet countless applications

The ArrestAll® dust collector is designed to handle a wide range of dust collection needs. From fine to coarse dust, it adapts to various applications with flexible disposal options and filter types. Its compact design, easy maintenance, and reliable performance make it ideal for small to medium-scale operations, ensuring efficient dust control in any environment.



# Enhanced Features and Custom Options

AAF's engineering team has meticulously designed the following performance features and options to ensure the ArrestAll® meets the demands of various industrial applications with optimum operation and efficiency.

## Performance Features

Smooth Flow Design	The filter design minimizes differential pressure by guiding vertical airflow through the filter pockets with corrugated spacers, creating a smooth laminar flow into the horizontal fan inlet cone
Fan Silencer	Complies with OSHA sound limits, achieving a minimum sound level of at least 82 dBA at 3ft from the fan
Clean-Air-Side Fan	Ensures cleaner, safer operation with lower noise and extended fan life, while keeping the surrounding area cleaner through a vacuum on the dirty air plenum
Control Panel	Factory-mounted control panel with integrated controls, designed to interlock with accessory equipment
Sprinkler System	Optional sprinkler system installed inside the collector for flammable applications. A water hookup is required
Explosion Vents	Optional NFPA compliant explosion vents for combustible applications

## Filters and Options

Optimized ArrestAll® Filter	<ul style="list-style-type: none"> <li>  Designed to maximize airflow and efficiency</li> <li>  Pocket and separator geometry minimizes differential pressure for optimal performance</li> <li>  One-piece construction enhances strength and sealing integrity, achieving up to 99+% efficiency on general industrial dust by weight</li> </ul>
Dust Disposal Options	<ul style="list-style-type: none"> <li>  Model AR1: Available in flat bottom with drawer, cart bottom, or funnel bottom</li> <li>  Model AR2, AR3, AR4: Offered in cart or funnel bottom</li> <li>  Model AR6: Available exclusively with funnel bottom</li> <li>  Funnel Bottom Units: Fit 55-gallon (189.27-liter) drums</li> </ul> <p>Access doors feature large, quick-opening latches for easy maintenance.</p>



Bringing clean air to life.®

A light gray world map is centered in the background of the page, showing the continents of North America, South America, Europe, Africa, Asia, and Australia.

## AAF International

Filtration has been at the heart of our business since 1921 and thanks to the high caliber of our products and services, we are trusted by many of the world's leading power and industrial companies. We provide our customers with the expertise, the solutions and the best available filtration technology to increase operational performance. Bringing clean air to life, our products provide the highest levels of indoor air quality, the lowest environmental emissions and the optimum safety conditions for employees and the wider community.

[aafintl.com](http://aafintl.com)

American Air Filter Company, Inc. has a policy of continuous product improvement. This document is provided for informal review and establishes no commitment or contract. We reserve the right to change any designs, specifications and products without notice, and we make no warranties regarding the subject matter of this document. Any use, copying or distribution of this document or any part of this document without our permission is prohibited.